



# MONTHLY MEMBERSHIP PROGRESS REPORT

District 325B1

Results as of: 1/31/2017

GMT: NAZMUL HAQUE

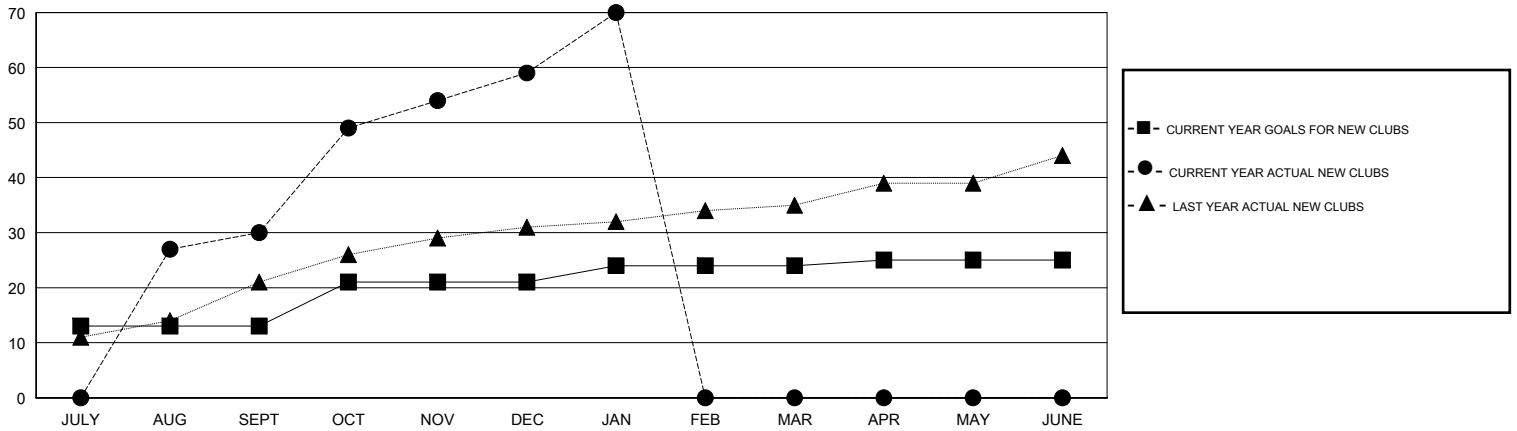
LOCATION NEPAL

GMT CA

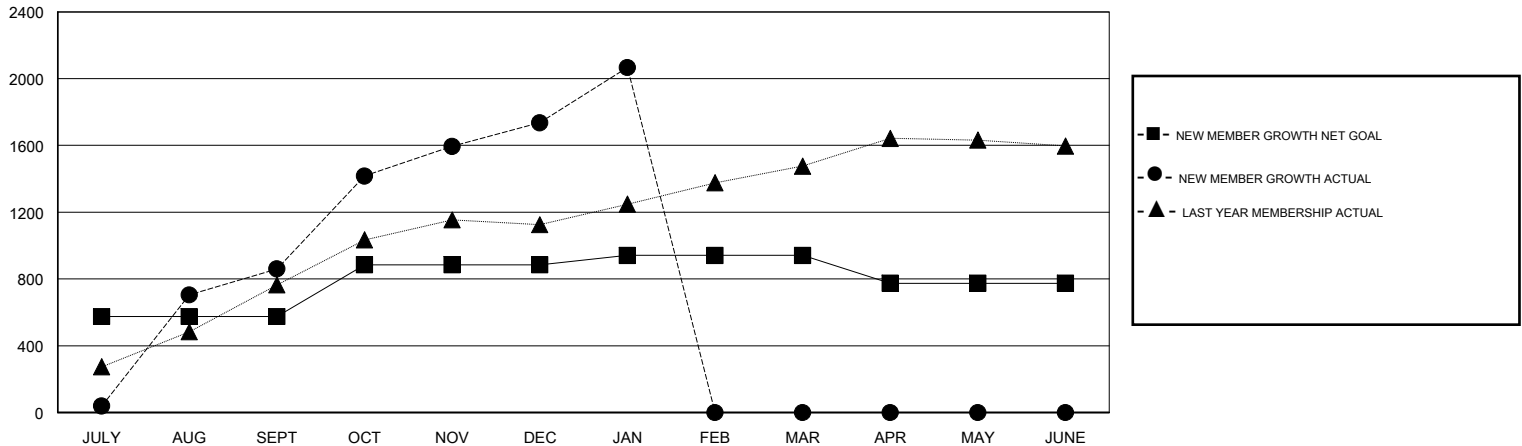
Clubs			
RESULTS FOR 2016-2017			
QUARTER	NEW CLUB GOAL	NEW CLUBS	DROPPED CLUBS
JULY/AUG/SEPT	13	30	0
OCT/NOV/DEC	8	29	0
JAN/FEB/MAR	3	11	0
APR/MAY/JUNE	1	0	0

Members			
RESULTS FOR 2016-2017			
QUARTER	NEW MEMBER GROWTH NET GOAL (not reinstated or transfers)	NEW MEMBER GROWTH ACTUAL (not reinstated or transfers)	DROPPED MEMBERS ACTUAL (including transfers)
JULY/AUG/SEPT	575	1,081	221
OCT/NOV/DEC	310	1,113	237
JAN/FEB/MAR	56	436	105
APR/MAY/JUNE	-167	0	0

GOALS AND ACTUAL NEW CLUBS CUMULATIVE



GOALS AND ACTUAL MEMBERS CUMULATIVE



DROPPED CLUBS: 0	228 CLUBS OF 281 ADDED 1 OR MORE NEW MEMBERS	<u>GENDER DISTRIBUTION</u>	
DROPPED MEMBERS		MALE	6,705 (77.97%)
DECEASED	2	FEMALE	1,894 (22.03%)
CLUB CANCELLED	0	TOTAL FAMILY UNIT MEMBERS	4,930
OTHER	561	FAMILY MEMBERS PAYING HALF DUES	3,101
TOTAL	563	<a href="#">CLICK HERE FOR CUMULATIVE MEMBERSHIP DATA</a>	